



NOTE

Read this manual carefully and learn to operate and service your grass catcher before using it.

To keep the warranty, the grass catcher must be installed and operated as directed in this manual.

Always wear eye protection when operating the grass catcher. The grass catcher is designed to be used in the "left-side", "right-side", and "front" positions relative to the operator's position.

For the serial number to ensure proper and timely service, please refer to the back of the grass catcher. When ordering parts, requesting service, or making inquiries, please refer to the serial number.

# GRASS CATCHER BLOWER

Look for this symbol to point out safety precautions. It means -- ATTENTION -- YOUR SAFETY IS INVOLVED.



GRAVELLY

NOTE

Read this manual carefully and learn to operate and service your grass catcher before using it.

To keep the warranty, the grass catcher must be maintained and operated as directed in this manual.

All references to "left-side", "right-side", "front", and "back" are given from the operator's position.

Use the serial number to ensure prompt and correct service when ordering parts, requesting service, or making inquiries.

GRASS CATCHER BLOWER

SERIAL NUMBER \_\_\_\_\_



Look for this symbol to point out important safety precautions. It means -- ATTENTION! BECOME ALERT! YOUR SAFETY IS INVOLVED.

Instructions for Safe Operation

CONTENTS

1. INSTRUCTIONS FOR SAFE OPERATION
2. OPERATING INSTRUCTIONS
3. SERVICE INSTRUCTIONS
4. ILLUSTRATED PARTS AND PARTS LIST
5. SET-UP INSTRUCTIONS
6. WARRANTY

## SECTION 1

### Instructions for Safe Operation

Improper use of this grass vacuum can injure people and damage the equipment. People using or servicing this grass catcher must read and follow the instructions in this manual.

It is important to understand that this manual and any other Gravely instruction manuals do not cover every possible danger. It is impossible for Gravely to know of all possible dangers in operating and servicing the tractor and attachments.

The purchaser must give these instructions to the people operating and maintaining this grass catcher. These people must use eye and foot protection.

#### 1.1 Preparation:

1. Read the tractor and the vac operator's manuals carefully.
2. Learn the location and function of all tractor and attachment controls.
3. Learn how to use the controls to stop the tractor and attachment.
4. Use caution with gasoline. Gasoline is very flammable. Keep it in a clean and tight container away from flames or hot items. Never put gasoline in the fuel tank while the engine is running or hot. Clean up spilled gasoline before starting engine.
5. Be certain that all shields, guards, and interlock switches are in the correct positions.
6. When hauling the tractor, connect the chassis and rear hitch to the transporting vehicle. Never connect from control levers, rods, or like items that could be damaged.
7. Operate the equipment only when discharge chute is in place or the complete grass catcher with collector boot and tube is in place.
8. As the vac basket fills with material, weight is removed from the front wheels. Limit the amount collected or add front weight to prevent loss of steering control.



1.2 Operation:

1. Wear foot and eye protection. Do not wear loose clothing.
2. Do not use the equipment in the dark without adequate lighting.
3. Keep the grass catcher in good condition. Maintain it as directed in this manual.
4. Replace all parts that become damaged or lost.
5. USE ONLY GRAVELY ACCESSORIES AND ATTACHMENT OR ATTACHMENTS GRAVELY HAS APPROVED FOR USE WITH THIS TRACTOR.
6. Do not overspeed the engine. Do not override the governor.
7. Keep away from moving parts.
8. Keep people and animals away from the operating area.
9. Do not let people other than the operator ride on the tractor.
10. Use a slow speed and engage the direction control lever slowly when operating on slopes.
11. Look for and keep away from hazards.
12. Shut engine off, move the PTO Control to "OFF", and remove ignition key before unclogging chute or removing grass catcher.
13. Look behind when operating in reverse.
14. After hitting an object with the equipment, stop the engine and check for damage. Repair any damage before continuing operation.
15. Operate the tractor only from the seat.
16. Travel up and down, not across slopes.
17. Never permit children to operate the tractor.
18. Before leaving the tractor, move the PTO Control to "OFF", lower mower, lock the brake, and remove the ignition key.

19. If there is a sudden change in the sound or vibration of the equipment, stop the engine and check for damage. Repair any damage or failure before continuing operation.
20. Never run the engine indoors except to move it outside. Exhaust fumes are dangerous.
21. Go slow on slick surfaces.
22. Follow traffic laws when operating on or near a road.
23. Before making adjustments or servicing, move the PTO to "OFF", turn the ignition switch to "OFF", and wait until all moving parts completely stop.
24. Check the mounting hardware for the blade frequently.
25. Keep the PTO control in the "OFF" position when transporting.

## SECTION 2

### Operating Instructions

#### 2.1 General:

1. When starting to cut grass with the vac in place, start at a slower than normal ground speed but with throttle set for high engine speed. Use the Gear Selector Lever to control speed. Select the gear for the best cutting and vac action. The heavier and wetter the grass, the slower the ground speed.
2. With lush, extra heavy or wet grass, it may be necessary to make two passes. First cut at maximum cutting height from ground surface, then recut at the lower setting. When the liners are full, they may be tied up while in the basket, then lifted from the baskets for disposal. It may be easier to remove the liners from the baskets by laying the basket on its side and removing the liner.
3. If the hose plugs, momentarily stop ground travel and allow it to clear. IF THE HOSE DOES NOT CLEAR, PUT THE PTO IN THE "OFF" POSITION AND STOP THE TRACTOR ENGINE BEFORE ATTEMPTING TO CLEAR THE HOSE.
4. Successful operation results from the thoughtful management of several variables:
  - a. Catcher will work best in dry grass. Between 10 a.m. and 6 p.m. would be an ideal time, after dampness has left in the morning but before evening dew.
  - b. Use fast throttle setting on the tractor at all times, since this gives better air flow in the basket or cart.
  - c. Try different travel speeds. Generally, third to fifth speeds are best.

#### 2.2 CAUTION:

1. Be sure the boot, hoses, and blower drive are properly assembled and secured prior to operating the vac and mower.
2. Always move the PTO to "OFF", turn the ignition switch to "OFF" and wait until all parts have stopped moving before unplugging the hoses.
3. To maintain steering control, mount wheel weights on the front wheels.

## SECTION 3

### Service Instructions

#### 3.1 When the Vac Stops Collecting, Check the Following:

1. Be sure the mower has a sharp Gravely blade on it.
2. Low tip speed on blade--check engine RPM and increase to a maximum of 3300 RPM, decrease ground speed.
3. High ground speed on tractor--shift to lower gear.
4. Grass conditions--grass must be dry.

#### 3.2 Vac Removal:

1. Loosen the six pan head cross machine screws which hold the belt cover to the channel guide. Remove the belt cover.
2. Put the control lever in the "OFF" (right) position. Remove the drive belt.
3. Disconnect the hose from the blower inlet.
4. Remove the blower support rod.
5. Place block under blower support frame weldment back near the blower housing.
6. Remove the four 5/8" bolts and the 1/2" bolt from the rear hitch side bars and remove the vac assembly.
7. Remove the mower boot.
8. Put the discharge chute on the deck and retain with two 3/8-16x1 carriage bolts (from under the deck), two 3/8 flat washers, and two 3/8-16 lock nuts.

#### 3.3 Vac Installation:

Reverse the removal procedure.



WARRANTY AND ILLUSTRATED PARTS LIST

41713

41714

41715

41716

41717

41718

41719

41720

41721

41722

41723

41724

41725

41726

41727

41728

41729

41730

41731

41732

41733

41734

41735

41736

41737

41738

41739

41740

41741

41742

41743

41744

41745

41746

41747

41748

41749

41750

41751

41752

41753

41754

41755

41756

41757

41758

41759

41760

41761

41762

41763

41764

41765

41766

41767

41768

Cover, Belt

Belt, Max 1/2-1/2

Guide, Belt

Assembly, Idler

Roller, Idler

Roller, Idler

Roller, Idler

Roller, Idler

Roller, Idler

Roller, Idler

Roller, Idler

Roller, Idler

Roller, Idler

Roller, Idler

Roller, Idler

Roller, Idler

Roller, Idler

Roller, Idler

Roller, Idler

Roller, Idler

Roller, Idler

Roller, Idler

Roller, Idler

Roller, Idler

Roller, Idler

Roller, Idler

Roller, Idler

Roller, Idler

Roller, Idler

Roller, Idler

Roller, Idler

Roller, Idler

Roller, Idler

Roller, Idler

Roller, Idler

Roller, Idler

Roller, Idler

Roller, Idler

Roller, Idler

Roller, Idler

Roller, Idler

Roller, Idler

Roller, Idler

Roller, Idler

Roller, Idler

Roller, Idler

Roller, Idler

Roller, Idler

Roller, Idler

Roller, Idler

Roller, Idler

Roller, Idler

Roller, Idler

Roller, Idler

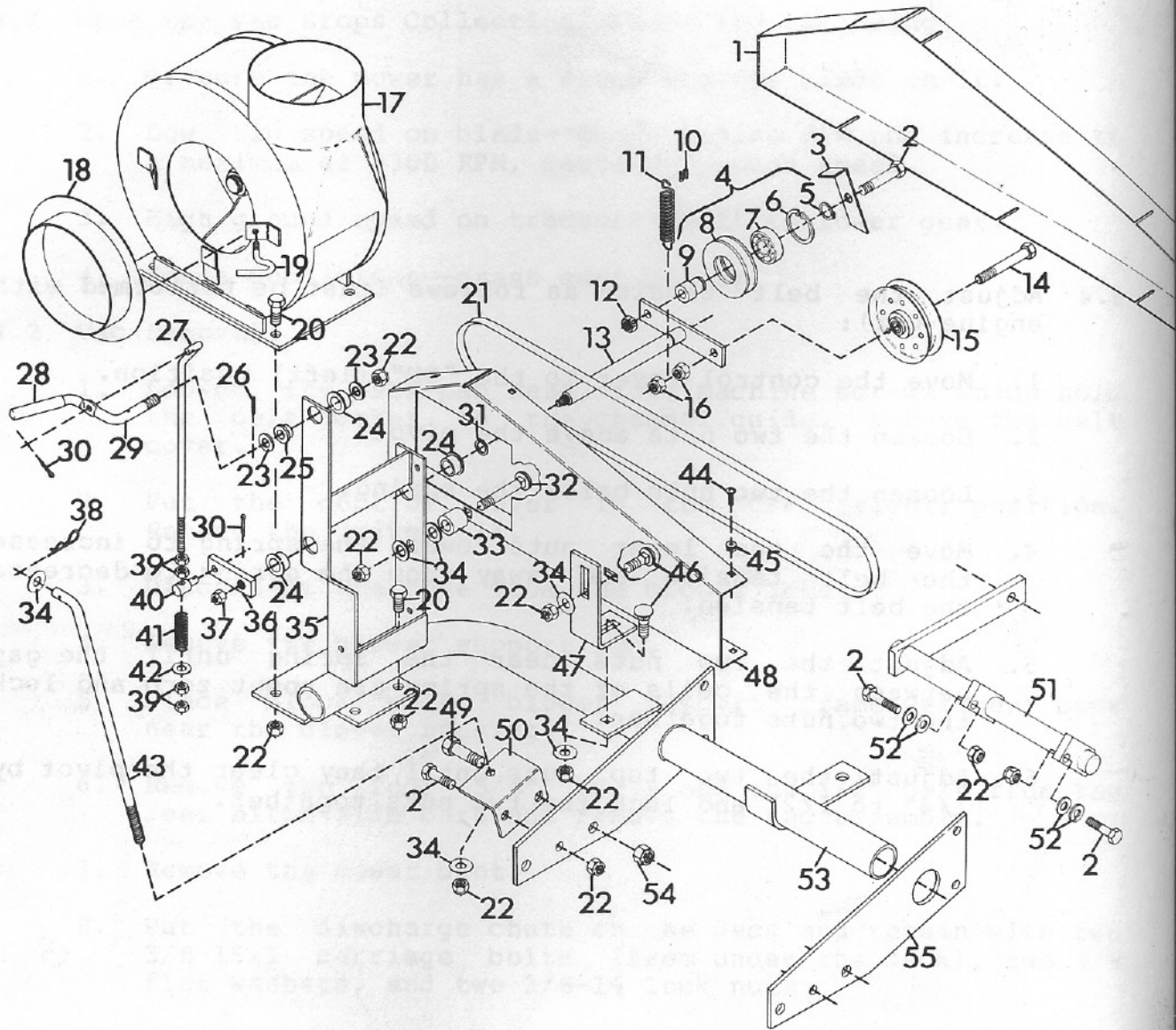
Roller, Idler

Roller, Idler

3.4 Adjust the belt tension as follows (must be performed with engine off):

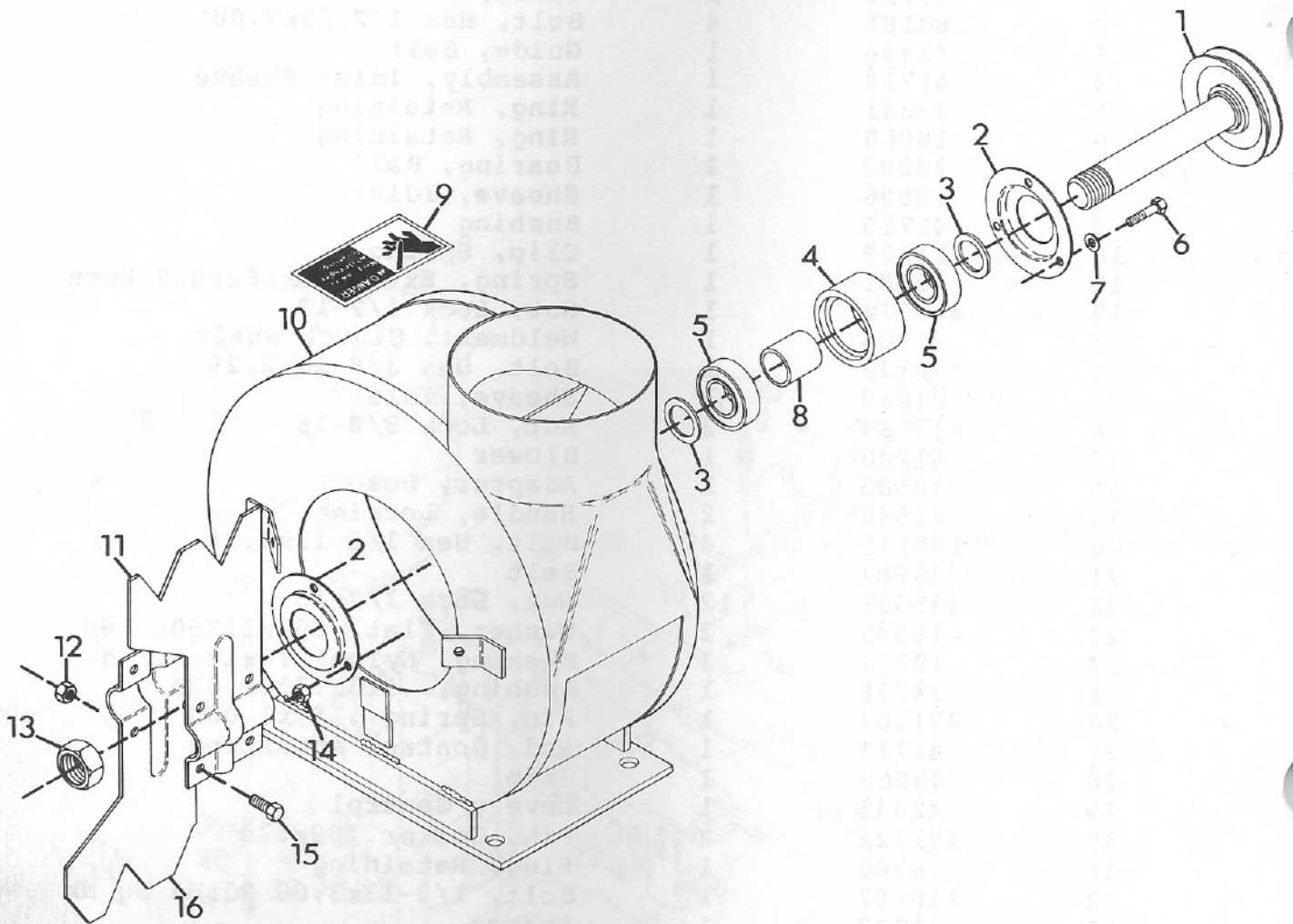
1. Move the control lever to the "ON" (left) position.
2. Loosen the two nuts above the pivot.
3. Loosen the two nuts below the spring.
4. Move the two lower nuts toward the spring to increase the belt tension and away from the spring to decrease the belt tension.
5. Adjust the two nuts near the spring until the gap between the coils of the spring are about zero and lock the two nuts together.
6. Adjust the two top nuts until they clear the pivot by 1/4" to 1/2" and lock the two nuts together.

Illustrated Parts and Parts List



ITEM NO.	PART NO.	QTY.	DESCRIPTION
1	41719	1	Cover, Belt
2	180181	4	Bolt, Hex 1/2-13x2.00
3	42444	1	Guide, Belt
4	41714	1	Assembly, Idler Sheave
5	39331	1	Ring, Retaining
6	18960	1	Ring, Retaining
7	38898	1	Bearing, Ball
8	38896	1	Sheave, Idler
9	41715	1	Bushing
10	11329	1	Clip, Spring
11	10681	1	Spring, Ext. 2.5x.62x5.8 Rate
12	414074	1	Nut, Lock 1/2-13
13	41704	1	Weldment, Clutch Shaft
14	180132	1	Bolt, Hex 3/8-16x2.25
15	21060	1	Sheave, Idler
16	413534	2	Nut, Lock 3/8-16
17	41700	1	Blower
18	38585	1	Adapter, Hose
19	42543	2	Handle, Locking
20	180175	4	Bolt, Hex 1/2-13x1.25
21	36987	1	Belt
22	435507	12	Nut, Lock 1/2-13
23	415543	2	Washer, Flat .531x1.250x.100
24	10174	3	Bushing, Nylon .76x1x.6 Flg.
25	34738	1	Bushing, .513x.750x.625
26	421202	1	Pin, Spring .187x1.000
27	41713	1	Rod, Control Actuating
28	42569	1	Grip
29	42445	1	Lever, Control
30	121222	2	Pin, Cotter .09x.75
31	26300	1	Ring, Retaining
32	120897	1	Bolt, 1/2-13x3.00 Rd Hd Sq Nk
33	41722	1	Spacer
34	37842	6	Washer, Flat 1.38x.56 Hard
35	41696	1	Weldment, Control Support
36	41708	1	Arm, Control
37	192481	1	Nut, Lock 3/8-24
38	11860	4	Pin, Cotter Hair
39	120376	4	Nut, Hex 5/16-18
40	41712	1	Pivot
41	41327	1	Spring
42	120393	1	Washer, Flat .344x.688x.065
43	42300	1	Rod, Blower Frame Support
44	160515	6	Screw, Machine 1/4-20x.5
45	11777	6	Grommet, Plastic
46	126485	2	Bolt, Carriage 1/2-13x1.25
47	41717	1	Bracket, Guard Support
48	41718	1	Guide, Channel
49	271723	4	Bolt, Hex 5/8-11x2.00
50	41716	1	Bracket, Vac Support
51	40653	1	Weldment, Vac Support
52	417098	4	Washer, Flat .531x1.000x.063
53	41690	1	Weldment, Blower Support Frame
54	418692	4	Nut, Lock 5/8-11
55	41691	1	Plate, Frame Mounting





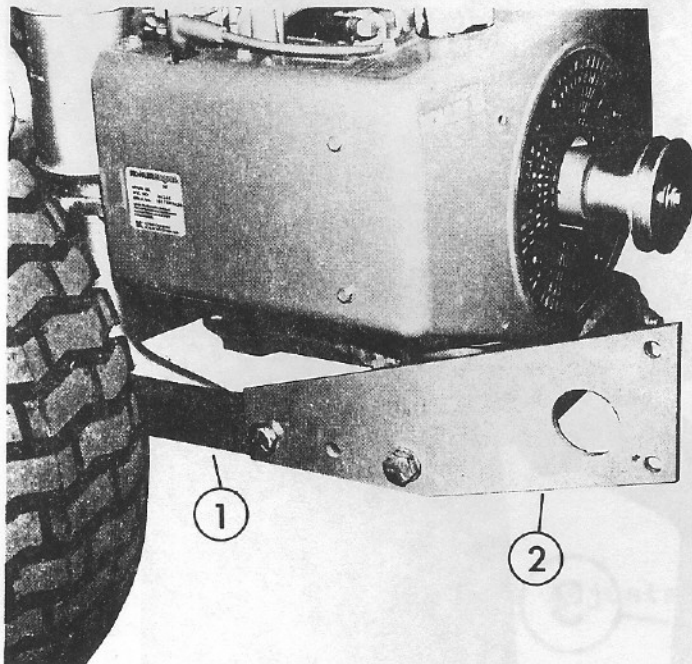
ITEM NO.	PART NO.	QTY.	DESCRIPTION
1	39027	1	Weldment, Spindle
2	36874	2	Bearing, Flange
3	39022	2	Washer, 1.000/1.031x1.500x.125
4	39025	1	Housing
5	39023	2	Bearing, Ball
6	180044	3	Bolt, Hex 1/4-20x2.00
7	39026	3	Washer, .263/.273x.562x.046
8	39024	1	Spacer
9	33926	1	Decal, Danger Hand
10	42551	1	Housing, Fan
11	39020	1	Blade, Fan
12	413447	4	Nut, Lock 5/16-18
13	39019	1	Nut, Hex 1-14 Jam Lock
14	424215	3	Nut, Lock 1/4-20
15	180075	4	Bolt, Hex 5/16-18x.625
16	39018	1	Blade, Fan



## SECTION 5

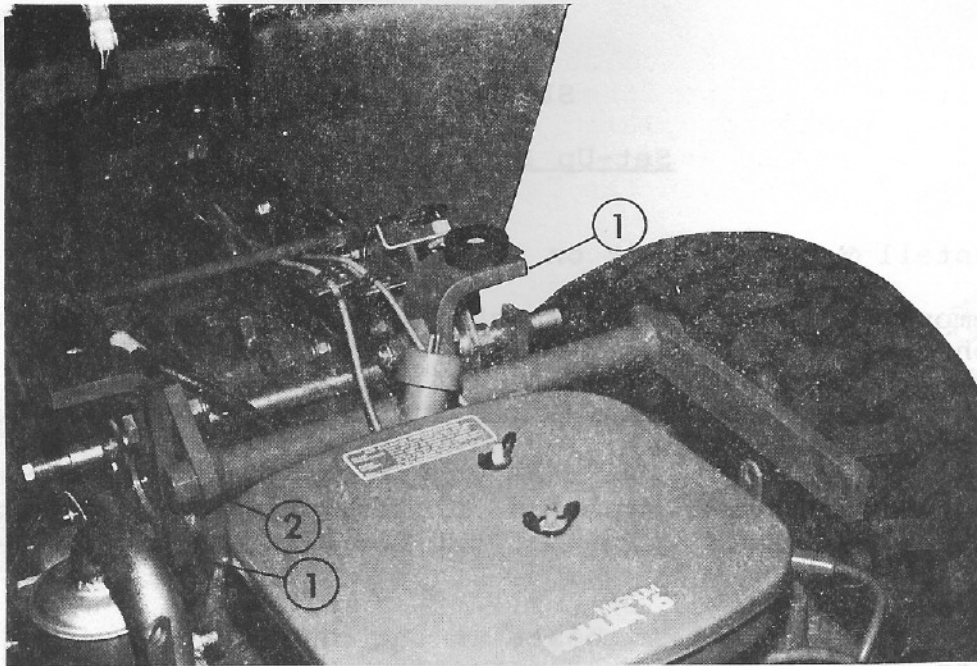
### Set-Up Instructions

- 5.1 Install Vac Drive Kit on the engine.
- 5.2 Remove the grass catcher blower from the shipping container.
- 5.3 Make sure the outside bolts on the rear hitch are installed from the front side.
- 5.4 Mount the frame mounting plate to the left hitch arm with two 5/8-11x2.00 bolts and two 5/8-11 lock nuts. See Figure 1.
- 5.5 Remove the top 1/2" bolts in the rear hitch brackets on the rear top of the transmission. Mount the vac support weldment to the rear hitch brackets with two 1/2-13x2 bolts and 1/2-13 lock nuts.
- 5.6 Put the blower frame support rod into the vac support weldment from the inside and retain with a 1.38x.56 flat washer and hair pin cotter. See Figure 3.
- 5.7 Remove the belt cover by loosening the six mounting screws.



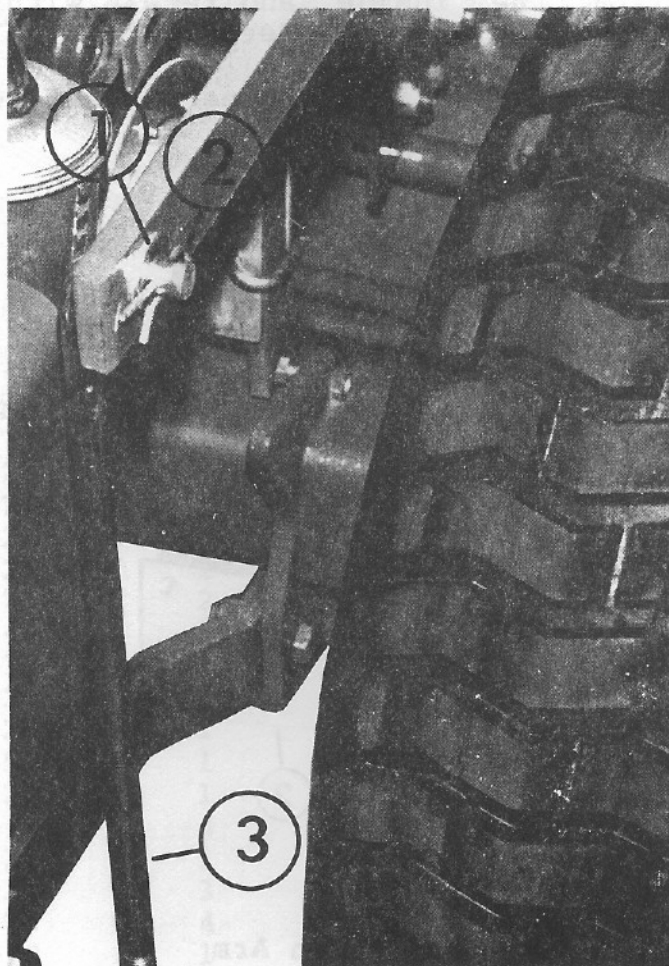
1 - Rear Hitch Arm  
2 - Frame Mounting Plate  
FIGURE 1

86047



86048

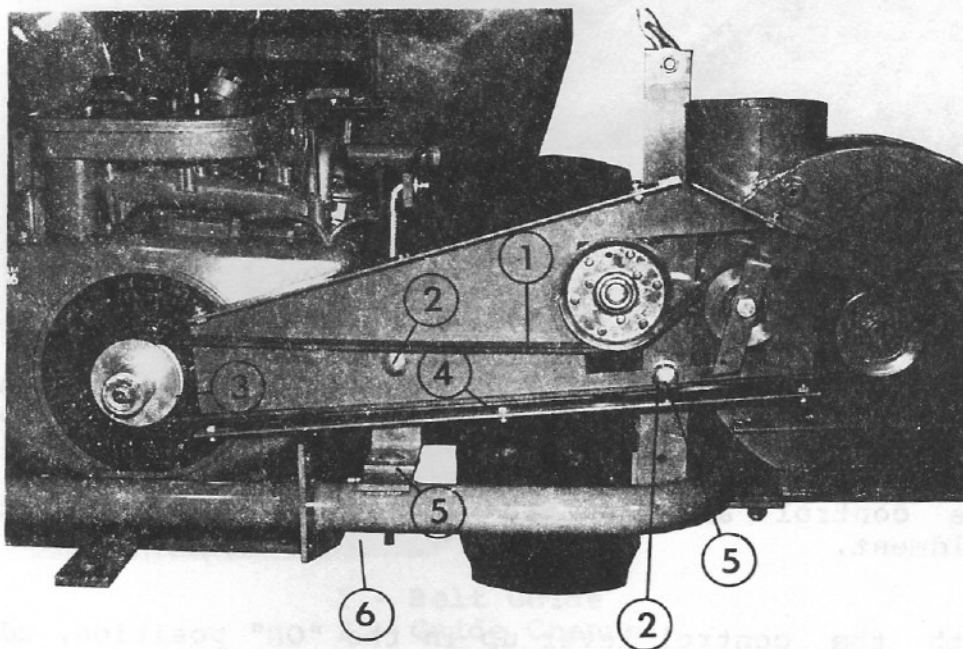
- 1 - Rear Hitch Bracket
  - 2 - Vac Support Weldment
- FIGURE 2



86049

- 1 - Flat Washer
  - 2 - Hair Pin Cotter
  - 3 - Blower Frame Support Rod
- FIGURE 3

- 5.8 Put the grass catcher blower in position behind the tractor. Slide the tube of the frame weldment into the frame mounting plate and slip the drive belt over the sheave on the engine flywheel. Hold in position by putting a 5/8-11x2 bolt in the front mounting hole. See Figure 4.
- 5.9 Slide the vac support bracket onto blower frame support rod, followed by a 1.38x.56 flat washer and 1/2-13 lock nut. Just start the nut. See the illustration in Section 4.
- 5.10 Swing the vac support bracket so that the holes align with the hitch. Install a 5/8-11x2 bolt and 5/8-11 lock nut in the rear hole and a 1/2-13x2 and 1/2-13 lock nut in the center hole. Tighten all of the bolts in the hitch. See Figure 5.
- 5.11 Tighten the nut on the blower frame support rod until the flat washer is hard to turn with the fingers, then tighten 1/2 turn. Do not overtighten as it will cause difficult operation of the direction control lever.
- 5.12 Assemble the control actuating rod with two 5/16-18 nuts above the pivot and the spring, flat washer, and two 5/16-18 nuts below the pivot. See the illustration in Section 4.

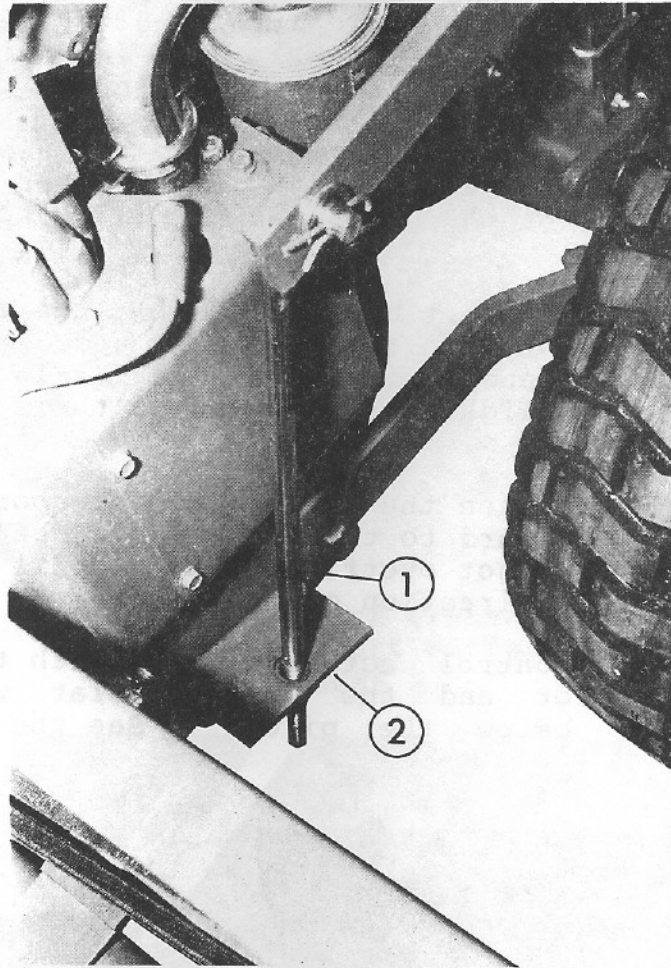


86050

- 1 - Drive Belt
- 2 - Channel Guide Vertical Adjustment Hardware
- 3 - Engine Sheave
- 4 - Plastic Grommet
- 5 - Channel Guide Fore - Aft Adjustment Hardware
- 6 - Tube
- 7 - Guide Channel

FIGURE 4





86051

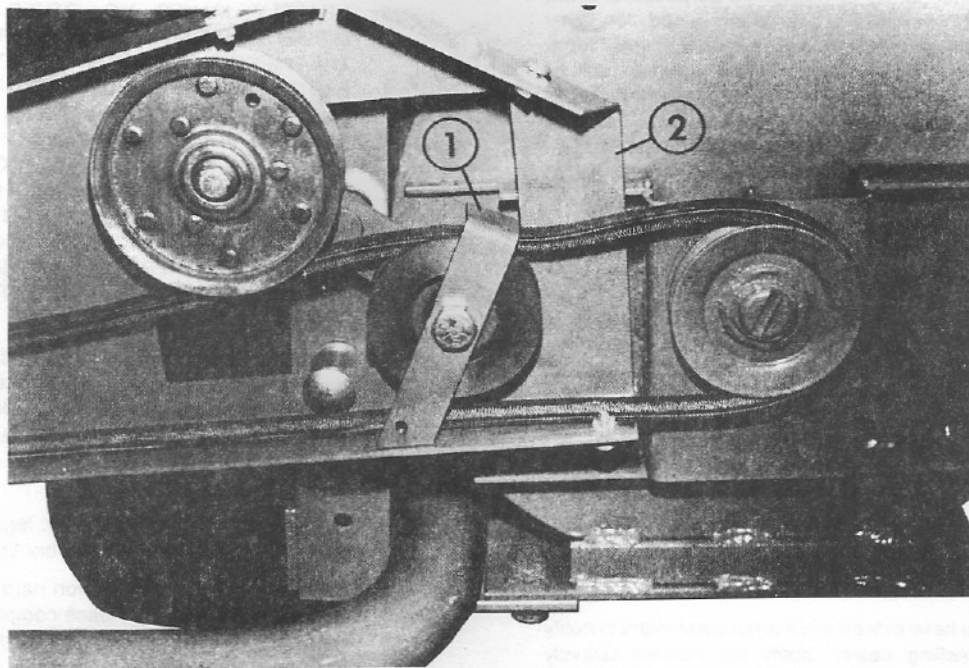
- 1 - Blower Frame Support Rod
- 2 - Vac Support Bracket

FIGURE 5

- 5.13 Move the control lever up to the "ON" position and adjust the two bottom nuts until the spring is about completely compressed and jam the two nuts together. (If this adjustment can not be made, it may be necessary to reorient the control arm on the serrations of the clutch shaft weldment.
- 5.14 With the control lever up in the "ON" position, adjust the guide channel fore and aft so that the belt is midway between the plastic grommet and the wall of the guide channel. (The right side is adjusted by using washers between the spacer and the control support weldment.) See Figure 4.
- 5.15 With the control lever up in the "ON" position, adjust the guide channel up and down until the belt is approximately  $3/16$ " from the bottom of the guide channel and parallel to the bottom.



- 5.16 With the control lever down in the "OFF" position, adjust the belt guide so that the angle on the bottom of the belt guide sits flat on the bottom of the guide channel and tighten the nut to lock it. See Figure 6.
- 5.17 Put the belt cover in position on the guide channel and tighten the six mounting screws.
- 5.18 After operating for 10 minutes, check belt declutching. Make readjustments if necessary.



1 - Belt Guide  
2 - Guide Channel  
FIGURE 6

86052

## SECTION 6

### LIMITED FIVE-YEAR WARRANTY

1. This Limited Five-Year Warranty is issued by Gravely International, Inc., only to the original purchaser. If Gravely equipment is leased by Gravely, this Warranty shall extend also to the original lessee as if such lessee were the original purchaser.
2. Gravely warrants that all new equipment manufactured by Gravely ("Gravely Products") shall be free of defects in material and workmanship for the term described in paragraph 4, below. Except as hereinafter provided, this Warranty does not cover any engine, tires or battery forming a part of the Gravely Product. Engine and tires are covered by and subject to separate warranties of the manufacturers thereof.
3. In the event that any Gravely Product warranted hereunder shall be defective or fail to conform with this Warranty, Gravely shall, subject to the provisions hereof, pay for, or provide labor and materials for, the repair or replacement of such defective Gravely Product.
4. This Warranty is for five years (60 months) from purchase date for Gravely Products used exclusively for personal, family or household purposes, and two years (24 months) for products used for other purposes (commercial use), excluding rental firms. Gravely products used for rental purposes will be warranted for 90 days. Repair of Gravely Products after the second year (24 months from date of purchase) shall be subject to a \$50.00 deductible for each repair. (After two years, Gravely agrees to repair or replace defective Gravely Products used exclusively for personal, family or household purposes only to the extent that the cost of such warranty covered repair or replacement exceeds \$50.00.)

Batteries are warranted by Gravely for a period of twelve (12) months only. If a battery shall fail within twelve (12) months of purchase, the replacement cost thereof shall be prorated over a twelve-month term based upon the number of months since purchase.

5. To obtain Warranty Service on a Gravely Product (including any battery or other component not manufactured by Gravely), use this procedure:
  - a. Notify the Gravely dealer from whom you purchased the equipment.
  - b. If you have moved and it is not convenient to notify the selling dealer, notify the nearest Gravely dealer. You should supply this dealer with a copy of the bill of sale as proof of the date of purchase.
  - c. Make arrangements to have the equipment delivered to the dealer (refer to paragraph 6 a., below).
  - d. If you have any questions concerning the Gravely Limited Warranty, they should be referred to:

Gravely International, Inc.  
One Gravely Lane  
Clemmons, NC 27012  
Attn: Customer Service Department
  - e. Warranty service on Gravely Products must be performed by an authorized Gravely dealer.

6. This Warranty does not cover the following:
  - a. Transportation to the Gravely dealership. (If the Gravely dealer provides transportation, he will charge for such service.)
  - b. Normal maintenance services and normal replacement of items such as spark plugs, belts, oil, oil filters, air filters, and mower, plow or cultivator blades, gauge wheels, skids and other wear items.
  - c. Any Gravely Product which has been altered or modified in any way.
  - d. Any repair or replacement occasioned by customer neglect or lack of proper maintenance. (The purchaser is responsible for making sure that Gravely Products are operated and serviced as directed in the applicable manual or service instruction. Incorrect use or maintenance will void this Warranty.)
  - e. Any repair occasioned by the use of any attachment not approved by Gravely. (The use of any such unapproved attachment will void this Warranty.)
7. GRAVELY MAKES NO OTHER EXPRESS OR IMPLIED WARRANTIES, OR WARRANTIES AS TO THE MERCHANTABILITY OR FITNESS FOR A PARTICULAR PURPOSE. ALL WARRANTIES ARE LIMITED IN DURATION TO THE TERMS SET OUT IN PARAGRAPH 4, ABOVE. GRAVELY SHALL HAVE NO LIABILITY FOR INCIDENTAL OR CONSEQUENTIAL DAMAGES RESULTING FROM THE BREACH OF ANY WARRANTY, INCLUDING, BUT NOT LIMITED TO, LIABILITY FOR INCONVENIENCE, RENTAL OR PURCHASE OF REPLACEMENT EQUIPMENT, OR FOR LOSS OF PROFITS OR OTHER COMMERCIAL LOSS.
8. Some states do not allow limitations on how long an implied warranty lasts, so the above statement may not apply to you. Some states do not allow the exclusion or limitation of incidental or consequential damages, so the above limitation or exclusion may not apply to you.
9. This Warranty gives you specific legal rights, and you may have other rights which vary from state to state.
10. A Gravely product registration card is supplied with each Gravely Product. Please complete the card and return it to Gravely at the address listed on the card. The equipment registration card will be used by Gravely for:
  - a. Recording date of purchase.
  - b. Notification of owners in compliance with the Consumer Product Safety Act, should any notification be necessary.The return of such card is necessary for your warranty to be effective.
11. This Warranty is not subject to change or modification by anyone, including Gravely dealers and no Gravely dealer is authorized to make any representations or promises on Gravely's behalf.

 **GRAVELY.**

One Gravely Lane, Clemmons, NC 27012